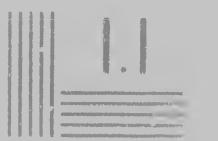
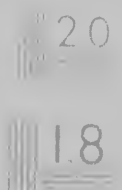
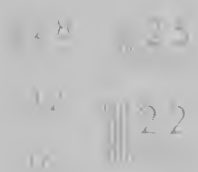
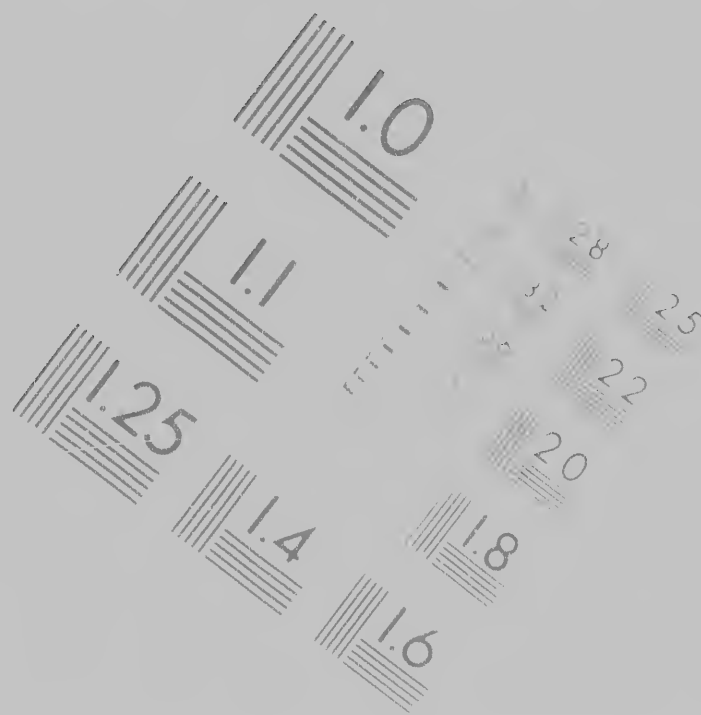


IMAGE EVALUATION
TEST TARGET



MAGE EVALUATION
TEST TARGET (MT-3)



**CIHM/ICMH
Microfiche
Series.**

**CIHM/ICMH
Collection de
microfiches.**

H
de
s.

Technical and Bibliographic Notes/Notes techniques

The Institute has attempted to obtain the best original copy available for filming. Features of this copy which may be bibliographically unique, which may alter any of the images in the reproduction, or which may significantly change the usual method of filming, are checked below

- | | | |
|--------------------------|---|--------------------------|
| <input type="checkbox"/> | Coloured covers/
Couverture de couleur | <input type="checkbox"/> |
| <input type="checkbox"/> | Covers damaged/
Couverture endommagée | <input type="checkbox"/> |
| <input type="checkbox"/> | Covers restored and/or laminated/
Couverture restaurée et/ou pelliculée | <input type="checkbox"/> |
| <input type="checkbox"/> | Cover title missing/
Le titre de couverture manque | <input type="checkbox"/> |
| <input type="checkbox"/> | Coloured maps/
Cartes géographiques en couleur | <input type="checkbox"/> |
| <input type="checkbox"/> | Coloured ink (i.e. other than blue or black)/
Encre de couleur (i.e. autre que bleue ou noire) | <input type="checkbox"/> |
| <input type="checkbox"/> | Coloured plates and/or illustrations/
Planches et/ou illustrations en couleur | <input type="checkbox"/> |
| <input type="checkbox"/> | Bound with other material/
Relié avec d'autres documents | <input type="checkbox"/> |

Notes/Notes techniques et bibliographiques

L'Institut a microfilmé le meilleur exemplaire qu'il lui a été possible de se procurer. Les détails de cet exemplaire qui sont peut-être uniques du point de vue bibliographique, qui peuvent modifier une image reproduite, ou qui peuvent exiger une modification dans la méthode normale de filmage sont indiqués ci-dessous

- Coloured pages/
Pages de couleur
- Pages damaged/
Pages endommagées
- Pages restored and/or laminated/
Pages restaurées et/ou pelliculées
- Pages discoloured, stained or foxed/
Pages décolorées, tachetées ou piquées
- Pages detached/
Pages détachées
- Showthrough
Transparence
- Quality of print varies/
Qualité inégale de l'impression
- Includes supplementary material

The copy filmed here
to the generosity of:

Librairie
Photo

The images appearing
possible considering
of the original copy
filming contract spe

Original copies in pr
beginning with the f
the last page with a
sion, or the back cov
other original copies
first page with a pri
sion, and ending on
or illustrated impres

Maps, plates, charts
different reduction r
entirely included in
beginning in the upp

copy filmed here has been reproduced thanks
to the generosity of:

Library of Congress
Photoduplication Service

Images appearing here are the best quality
possible considering the condition and legibility
of the original copy and in keeping with the
filming contract specifications.

Original copies in printed paper covers are filmed
beginning with the front cover and ending on
the last page with a printed or illustrated impres-
sion, or the back cover when appropriate. All
other original copies are filmed beginning on the
first page with a printed or illustrated impres-
sion, and ending on the last page with a printed
or illustrated impression.

Maps, plates, charts, etc., may be filmed at
different reduction ratios. Those too large to be
entirely included in one exposure are filmed
beginning in the upper left hand corner, left to

L'exemplaire filmé fut reproduit grâce à la
générosité de:

Library of Congress
Photoduplication Service

Les images suivantes ont été reproduites avec le
plus grand soin, compte tenu de la condition et
de la netteté de l'exemplaire filmé, et en
conformité avec les conditions du contrat de
filmage.

Les exemplaires originaux dont la couverture en
papier est imprimée sont filmés en commençant
par le premier plat et en terminant soit par la
dernière page qui comporte une empreinte
d'impression ou d'illustration, soit par le second
plat, selon le cas. Tous les autres exemplaires
originaux sont filmés en commençant par la
première page qui comporte une empreinte
d'impression ou d'illustration et en terminant par
la dernière page qui comporte une telle
empreinte.

Les cartes, planches, tableaux, etc., peuvent être
filmés à des taux de réduction différents.
Lorsque le document est trop grand pour être
reproduit en un seul cliché, il est filmé à partir

grâce à la

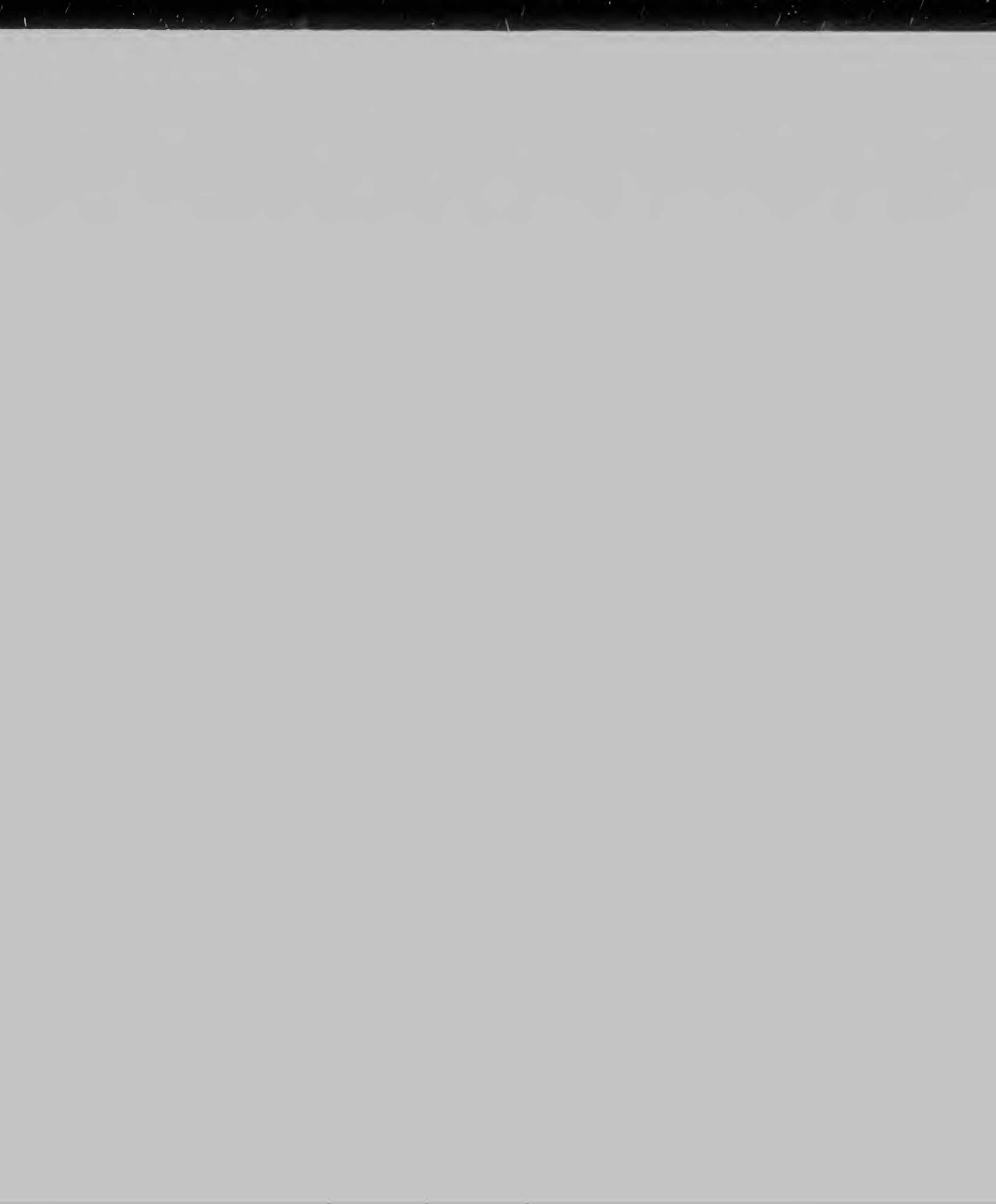
ess
Service

produites avec le
de la condition et
né, et en
du contrat de

la couverture en
en commençant
ant soit par la
e empreinte
oit par le second
es exemplaires
ençant par la
e empreinte
en terminant par
ne telle

etc., peuvent être
différents.

rand pour être
st filmé à partir



BY THE

RESOL

T

great Kanhaway :
sylvania, shall be o
the completion of
the south ; and th
rallel of thirty-nin

That the settle
or on the order of
free males of full
temporary govern
laws nevertheless
alteration, countie

That when any
thereof to Congre
convention of repr
vided that both the

FIRST. That

SECOND. Tha

BY THE UNITED STATES IN CON-
GRESS ASSEMBLED.

APRIL 23, 1784.

RESOLVED,

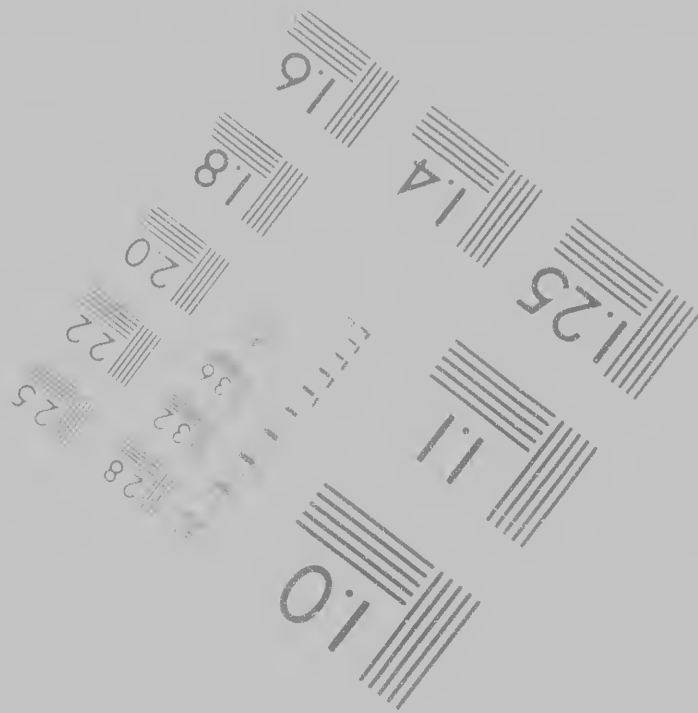
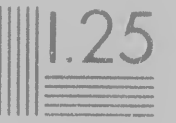
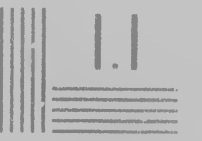
THAT so much of the territory ceded, or to be ceded by individual states, to the United States, as is already purchased, or shall be purchased, of the Indian inhabitants, and offered for sale by Congress, shall be divided into distinct states in the following manner, as nearly as such cessions will admit; that is to say, by parallels of latitude, so that each state shall comprehend from north to south two degrees of latitude, beginning to count from the completion of forty-five degrees north of the equator; and by meridians of longitude, one of which shall pass through the lowest point of the rapids of Ohio, and the other through the western cape of the mouth of the great Kanhaway: but the territory eastward of this last meridian, between the Ohio lake Erie, and Pennsylvania, shall be one state, whatsoever may be its comprehension of latitude. That which may lie beyond the completion of the forty-fifth degree between the said meridians shall make part of the state adjoining it on the south; and that part of the Ohio, which is between the same meridians coinciding nearly with the parallel of thirty-nine degrees, shall be substituted so far in lieu of that parallel as a boundary line.

That the settlers on any territory so purchased and offered for sale, shall, either on their own petition, or on the order of Congress, receive authority from them, with appointments of time and place, for their free males of full age, within the limits of their state, to meet together, for the purpose of establishing a temporary government, to adopt the constitution and laws of any one of the original states; so that such laws nevertheless shall be subject to alteration by their ordinary legislature; and to erect, subject to a like alteration, counties, townships, or other divisions, for the election of members for their legislature.

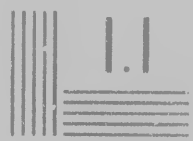
That when any such state shall have acquired twenty thousand free inhabitants, on giving due proof thereof to Congress, they shall receive from them authority, with appointments of time and place, to call a convention of representatives, to establish a permanent constitution and government for themselves. Provided that both the temporary and permanent governments be established on these principles as their basis.

FIRST. That they shall for ever remain a part of this confederacy of the United States of America.

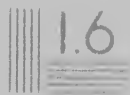
SECOND. That they shall be subject to the articles of confederation in all those cases, in which the ori-



Photographic
Sciences
Corporation

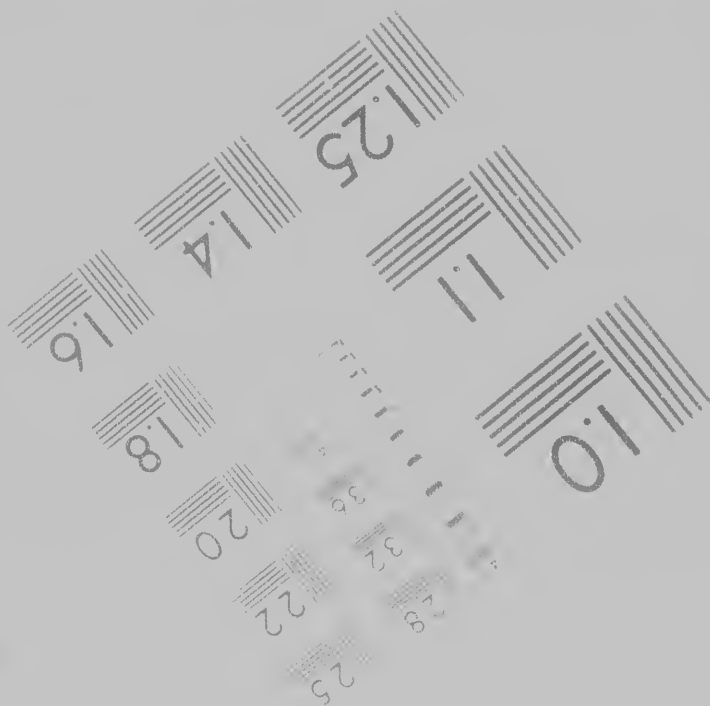


2.0



6"

Canadian Ins



Photographic
Sciences
Corporation

23 WEST MAIN STREET
WEBSTER N Y 14580
(716) 872-4503





Canadian Institute for Historical Microreproductions / Institut canadien de microreproductions historiques

© 1986

uctions historiques

6

Coloured plates and/or illustrations/
 Planches et/ou illustrations en couleur

Bound with other material/
 Relié avec d'autres documents

Tight binding may cause shadows or distortion
along interior margin/
 La reliure serrée peut causer de l'ombre ou de la
distorsion le long de la marge intérieure

Blank leaves added during restoration may
appear within the text. Whenever possible, these
have been omitted from filming/
 Il se peut que certaines pages blanches ajoutées
lors d'une restauration apparaissent dans le texte,
mais, lorsque cela était possible, ces pages n'ont
pas été filmées.

Additional comments / CIHM no 60365
 Commentaires supplémentaires

This item is filmed at the reduction ratio checked below/
Ce document est filmé au taux de réduction indiqué ci-dessous

10X				14X				18X					22X
				12X				16X				20X	

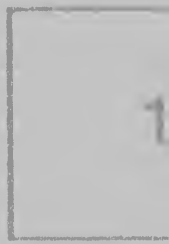
Quality of print varies/
Qualité inégale de l'impression

Includes supplementary material/
Comprend du matériel supplémentaire

Only edition available/
Seule édition disponible

Pages wholly or partially obscured by errata
slips, tissues, etc., have been refilmed to
ensure the best possible image/
Les pages totalement ou partiellement
obscurcies par un feuillet d'errata, une pelure
etc., ont été filmées à nouveau de façon à
obtenir la meilleure image possible

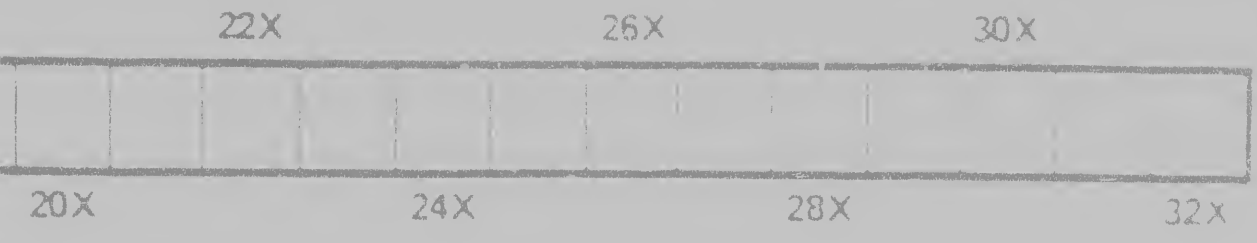
Maps, plates, charts
different reduction r
entirely included in c
beginning in the upp
right and top to bott
required. The follow
method:



rtion
de la
these
outées
e texte,
s n'ont

60365

d below/
qué ci-dessous



Maps, plates, charts, etc., may be filmed at different reduction ratios. Those too large to be fully included in one exposure are filmed beginning in the upper left hand corner, left to right and top to bottom, as many frames as required. The following diagrams illustrate the method:

Les cartes, planches, tableaux, etc., peuvent être filmés à des taux de réduction différents. Lorsque le document est trop grand pour être reproduit en un seul cliché, il est filmé à partir de l'angle supérieur gauche, de gauche à droite et de haut en bas, en prenant le nombre d'images nécessaire. Les diagrammes suivants illustrent la méthode



etc., peuvent être
différents.
rand pour être
t filmé à partir
gauche à droite.
nombre
mmes suivants



